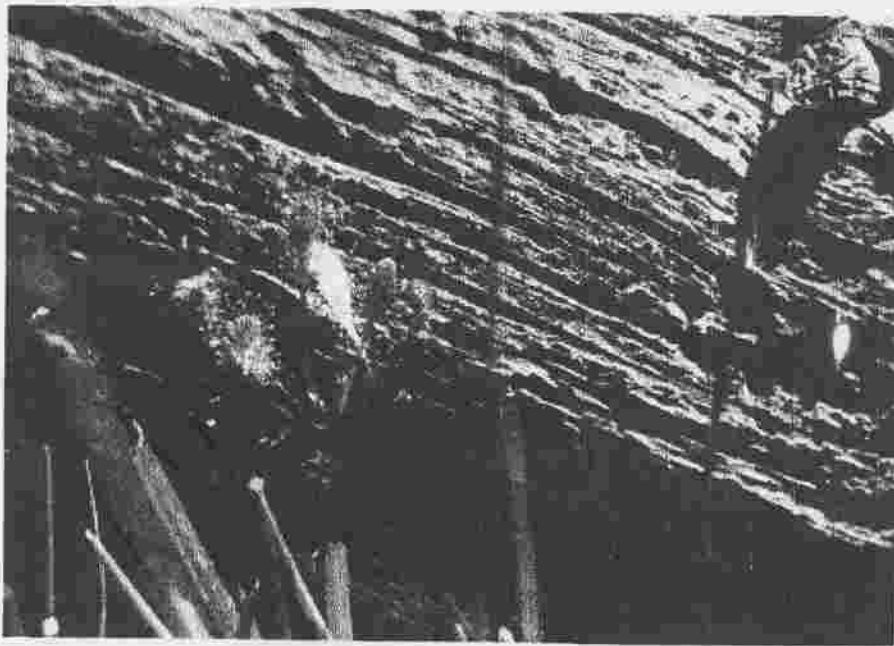


Summer 1998

Volume 7, Number 3

*Bay Area
Carnivorous Plant
Society
Newsletter*



Bay Area Carnivorous Plant Society
39011 Applegate Terrace
Fremont, California 94536

Officers and Organizers

President	Larry Logoteta (209) 823-6542
Vice President	Mike Ross (707) 422-1993
Secretary	Cindy Slezak (415) 673-0953
Treasurer	Joe Mazrimas (510) 373-1690
BACPS membership	Carl Wong (510) 796-9654
Newsletter Editor	Gary Dughi (530) 751-2996
Auction Managers	Glen Rankin (415) 325-1982
Auctioneer	Peter D'Amato (707) 869-3641
Raffle Manager	Aaron Haiman (510) 523-5091

Bay Area CP Events Calendar

August 15, 1998	BACPS Meeting,	Berkeley Botanical Garden
November 21, 1998*	BACPS Meeting,	Randall Junior Museum, San Francisco

Meetings starts at noon and end around 4:00PM.

* Note change in date of November meeting.

Membership

Any person can become a member of the Bay Area Carnivorous Plant Society by paying a membership fee of \$10.00 US for each calendar year. Membership includes 4 issues of the BACPS newsletter along with other benefits. An extra \$5.00 US will be charged for non-US addresses to cover additional mailing expenses of the newsletter. Dues may be given to the society treasurer, Joe Mazrimas, at the meetings or mailed to the society address on the front cover. Make checks payable to BACPS.

Photo/Illustration Credits

Cover photo: *Drosera* growing from log. Photograph by BACPS member Gary Dughi

Window Greenhouse article illustration: Article author Debra Blanke

President's Message

Larry Logoteta

I would like to thank Robert Gibson for his talk on carnivorous plants (cp) of the areas around Australia and Tasmania. His lecture, which lasted almost 2 hours, and slides were very informative on the species in his native areas.

Things which were discussed were meeting places and what time the meetings will start. Here are the times: meetings begins about 12:00pm, 1:30pm guest speaker, 2:30pm silent auction/ raffle closes and 3:00pm regular auction begins and meeting ends around 4:00pm.

I need pictures for the newsletter and articles on any subject. We need plants for our raffle table and auction. This is one way to help pay for our newsletter and keep our dues stable at \$10.00 a year. If you bring a new person to become a member that person doesn't have to pay the dues. The first visit is free to look us over. Then, if they show up in subsequent meetings, dues will be due if they want to become a member.

Meeting Notes

June 20, 1998

There were 39 people at the San Jose meeting. Robert Gibson gave his talk on cp of Australia and the cp collections of other cultivators in Europe. Joe Miller gave us a summary of what he heard and saw at the ICPS meeting in Germany. There was much interest from the group there to have the next meeting in California. Many of the speakers said they would attend and give presentations to the California conference. About 6-8 people raised their hands to a question of serving on a committee to organize and have the meeting here. It was determined that such an effort wouldn't be easy and help would be needed from many members. This effort should start now if the meeting was scheduled for next summer.

We have 2 more meeting dates: the August 15 meeting at U. C. Berkeley Botanical Gardens and the Nov. 21 meeting at Randall Museum in San Francisco.

Indoor Window Greenhouse - For Most CP's

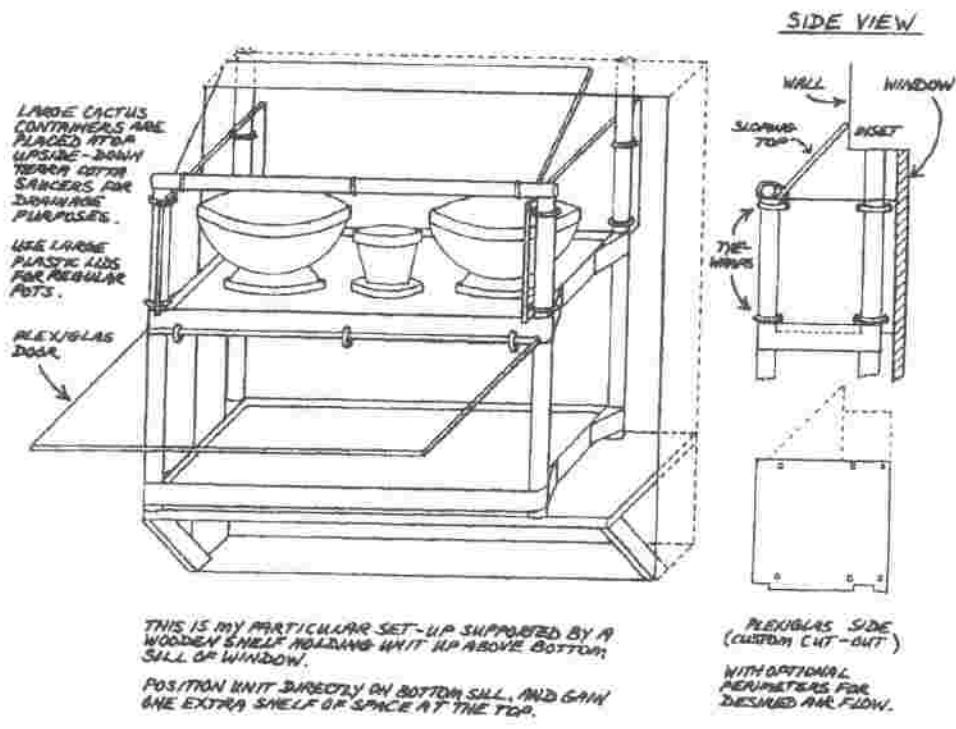
Debra Blanke
304 Sylvia Ave.
Milpitas, CA 95035-5240
(408)263-8944
KIT6PWW@AOL.COM

Do you have a moderate/large-sized window with an exposure which gets several hours of sunlight per day? My kitchen window has a western exposure and half of it can be opened against a screen section (this last feature is optional, depending on what you are trying to do). In this window, I have constructed a large, two-shelf greenhouse from (you guessed it) more stuff gathered from around our house and yard.

I used two horizontal sections (you can use more sections if your window is larger than mine - 4'x4') of plastic shelving common at most hardware stores. This is the kind of heavy-duty shelving which you assemble yourself from already-constructed pieces and parts. Plastic composition is a great plus, as it is impervious to water and moisture, and the horizontal shelving has a little wall around it, without holes, so you can fill the shelf with a shallow expanse of water, should you so desire. (I prefer to insert water-catching trays for greater ease in cleaning). This shallow pond can serve two important functions: 1. A source of extra, constant humidity; 2. A moat to prevent ants from getting into your plantings and establishing their own colonies inside your house (been there...and done that..., painfully so). In the latter case, place each pot on the flat side of a large plastic jar, spaced away from walls of the enclosure, to create islands of plants isolated from each other in this moat.

Custom-cut and drilled pieces of Plexiglas sheeting can be bound to the plastic shelving structure with plastic tie-wraps to form three sides (including a large hanging front door per shelf) and even a top (sloping or otherwise). The window itself serves as the fourth side. You can purchase a nifty little Plexiglas knife. With this tool and a ruled, metal straight edge, I can make measurements, mark pieces, and quickly custom-cut my Plexiglas. It would be best if you securely mount this greenhouse to your window sill and/or wall around it. I set mine on a shelf built into the windowsill and bolted the middle structural section of the whole unit to an encircling, wooden bracket, securely screwed into the wall around the sill.

If you wish, you can subdivide each shelf for different temperature and humidity requirements. For example, keep the cooler plants in front of the optional open window/screen section, or make a special hothouse section



with more heating/humidity devices enclosed. You can separate your cool-house/warm-house/hothouse/whatever-you-want-house sections from each other by constructing and installing special custom-fit dividers described later in this article. You can even cut the large main door into different sections, sized specifically for its very own cordoned-off habitat. The top shelf will be warmer than the bottom shelf, and you can use that to your advantage as well; for example, place the hothouse section on the top shelf/fixed-window area, where it is already naturally warmer than the rest of the greenhouse. Get creative, use your imagination, and experiment to figure out what works best for you - you can do that with this unit!

HEATING/HUMIDITY DEVICES: For the warm-house and hothouse, I use LARGE glass jars filled with water, each provided with a heavy-duty tube-style aquarium heater. (Make sure your jar is of the proper height and width to safely accommodate the size and style of your aquarium heater - FOLLOW MANUFACTURER'S INSTALLATION AND SAFETY INSTRUCTIONS CAREFULLY.) This aquarium heater is placed into the jar of water, and the thermostat is set to provide the temperature you need inside the greenhouse. The temperature of the water WILL NOT be the same as that of your greenhouse. Test both independently, and adjust your heater until you have what you desire in both. In my situation, I found that 105 °F of water equates out to about 80 °F maximum (with no added lighting

from outside) - FOR MY HOUSE. These figures will vary according to what temperature you keep the inside of your house at.

The beauty of this set-up is that the thermostatic aquarium heater will keep your plants from getting too cold, no matter what the season (unless your power goes off). You now have temperature stability and humidity at the temperature you need.

RULE OF THUMB: Want more humidity? Install MORE or LARGER containers of heated water. Want higher temperatures? Set the aquarium heater(s) accordingly. Then, make any kind of cool/warm/hothouse you want, or combine them as desired using insulated dividers between sections. Also, you will need to refill each jar every day to make up for what has evaporated the day before, keeping in mind that the water should be at a certain level in your jar for safe and effective operation of your aquarium heater.

SUNLIGHT: I used to let the sunlight come straight in through the window to the plants. Though all of my plants started looking greener and developed more intense coloration than they exhibited in the mini-greenhouse, a few started looking pretty down-and-out, as if they were being cooked! Well... I took the fine split-bamboo curtain I've been using on my window, custom-fit sections for each shelf level, and thinned it out by removing every third horizontal slot to allow more light to pass through it. This curtain was installed between the shelving and the window behind it, resulting in a nice balance of filtered, dappled lighting in the afternoon.

This worked pretty well until we were inundated with a heat wave, and the plants started looking a little peaked. So, I came up with another idea which absolutely creates the perfect lighting conditions for most all CP's with absolutely NO MORE COOKING OF THE PLANTS!

THE WONDERS OF BUBBLE WRAP! I got this idea from visiting Peter D'Amato's California Carnivores Nursery, where I noticed he uses bubble wrap as insulation at the entrance of his hothouse and inside (if my memory serves me right). I thought: let's cover the window behind the greenhouse with large diameter bubble wrap (bubbles about 1" in diameter, or greater).

I made up a large, custom-sized sheet of bubble wrap (securing small roll sections with book tape on the flat side) to fit my window, and affixed this sheet to my window with more book tape, flat side to the window. The bamboo blinding (not necessary, but it improves the look of the greenhouse) is draped over the bubble-wrapped window.

Construct habitat partitions by sandwiching one or two layers of bubble wrap (large/small diameter, respectively) between two pieces of custom-fit Plexiglas sheets. Use book tape to hold it together, or drill holes and use tie-wraps to keep it all together, and install as needed. These dividers can make quite a temperature difference between habitats.

Perhaps the most interesting thing I discovered about bubble wrap was purely accidental: namely, large diameter bubble wrap (not the small stuff) does something very interesting with the sunlight coming in through the window. It diffuses and refracts the light so the window is actually brighter without having any cooking effect on leaves, and my plants are now the happiest looking campers I've ever seen!

Presently, I have placed most of my *Drosera*, all of my *Sarracenia*, *Utricularia*, and most of my *Dionaea* outside in mini-bogs where they absolutely thrive. However, I have a few weakened *Dionaea*, *Drosera*, and all of my Pings, *Cephalotus* and *Nepenthes* in this window greenhouse, and they are looking great and growing by leaps and bounds!

I recently modified my unit by cutting out the middle shelf (leaving the middle support intact for greater structural strength), and hung large, circular plant saucers from the very top (from a steel beam). I even hung some saucers from other saucers, and arranged these symmetrically through 2/3 of the height of the greenhouse, to provide large, pleasant-looking growing areas for my *Nepenthes*. The lowland varieties are placed on the higher elevation saucer hangings (where there is a greater accumulation of heat and humidity), and the highland varieties go below on the middle saucer hangings or on the base shelf with my other CP's previously mentioned (where temperatures are lower).

Only TWO of my water heaters are necessary to make my greenhouse a warm-house, and I have vertically-mounted full-spectrum lights (or Vita-Lites) on each end of the unit, as well as a large, horizontally-mounted Vita-Lites at the very top. I only open the top and lower front door of the unit when the sunlight coming through the window/bubble wrap combination starts to heat things up. I close the door and top up at night after the sun goes down, and turn on the Vita-Lites and spray reverse osmosis water generously. At bedtime, I spray again and turn out the lights. At dawn, the lights come back on, I do my daily watering plus a spraying, then spray occasionally throughout the day until the sun comes around to this side of the house again in the afternoon. I love this greenhouse!

[WORD OF CAUTION: Be careful to install electrical wiring so that electricity does not come in contact with water or with you, and you might want to use something like a Waber Strip® or two for your aquarium heaters

and lights - a power strip with a fuse, reset capability, and an external on/off switch for safety. Also, keep heaters and lights **PHYSICALLY ISOLATED AND SAFELY AWAY FROM** plants, plastic, blinding, curtains, and other structures which could melt or catch fire! (I set my water heaters on saucers.) And **NEVER** let your water heaters run out of water, or else you will have a severe fire danger on your hands! This type of set-up is not safe to have in a window low enough for toddlers or animals to get into - keep all small children or animals from being able to reach it.]

Announcements

BACPS Dues. Beginning January 1998 dues of \$10.00 US per year will be collected for membership in the Bay Area Carnivorous Plant Society. An extra \$5.00 US will be charged for non-US addresses to cover additional mailing expenses of the newsletter. Dues may be given to the society treasurer, Joe Mazrimas, at the next meeting or mailed to him at:

Joe Mazrimas, 329 Helen Way, Livermore, CA 94550

Make checks payable to BACPS.

Computer CP Mailing List. There is a computer mailing list specifically for carnivorous plant discussions. To participate, you need to be able to send electronic mail from a personal computer. To subscribe, either send the single-line message: "SUB CP Richard Nixon" to the internet address: "LISTSERV@CUTTER.HPL.HP.COM", or contact the list manager, Rick Walker, at "WALKER@OPUS.HPL.HP.COM". Remember to substitute your own given name for "Richard Nixon" in the example above! There is also a CP World-Wide-Web Database at "http://www.hpl.hp.com/bot/cp_home" or "http://192.6.19.66/bot/cp_home".

Bring Plants to display at the next meeting. There is no judging; so don't worry about having the best or biggest plant. The meeting hall has plenty of room for display. If you have something extra; bring that along for the auction, raffle, or to trade. We can always use items for the raffle!

Next Newsletter Deadline

Please send in your articles, biographies, introductions, growing tips, trip reports, or photos! Announcements, calendar items, want ads, and articles for the next Newsletter must be received in writing or as a text file on a 3.5 inch floppy disk by October 10, 1998. Send information to the newsletter editor at:

Gary Dughi, 1341 Geneva Avenue, Yuba City, CA 95991
(new postal address)

Better yet, e-mail contributions to Gary Dughi at Gary.Dughi@tdot.ca.gov (new email address.) Scanned images may also be sent to this address.



Sarracenia hybrid in bloom

Photograph by BACPS member
George Bush

Treasurer's Report

Joe Mazrimas

(as of 6-20-98)	INCOME	DEBIT
Dues	\$230.00	
Oakland Show	\$141.00	
T-shirts	\$30.00	
Silent Auction	\$9.00	
Sellers	<u>\$106.00</u>	
TOTAL	\$516.00	

Newsletter (200 copies)		\$81.51
Postage (142 copies)		\$38.00
Sales tax (Oakland Show)		\$32.00
Oakland Show deposit		\$50.00
Robert Gibson		<u>\$40.00</u>
TOTAL		\$241.51

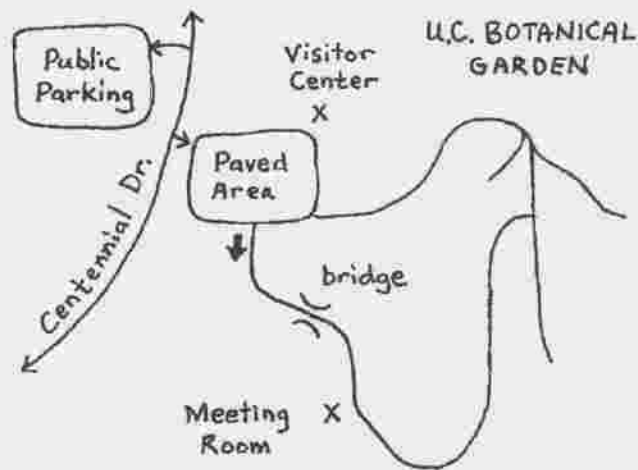
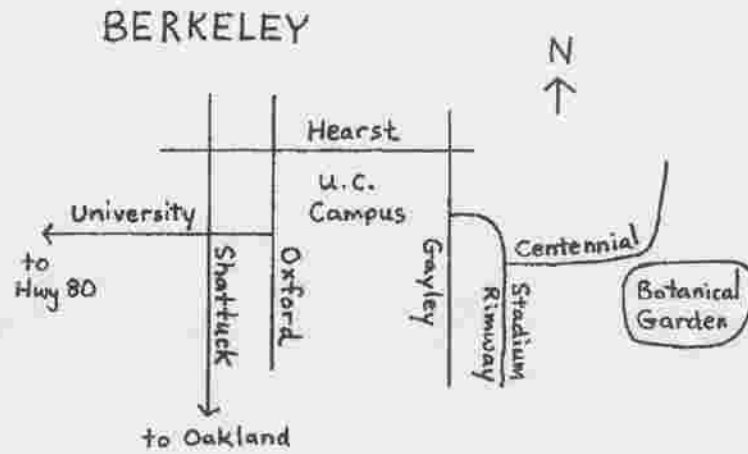
Current Balance	\$274.49
Previous Balance (1-31-98)	<u>\$585.71</u>
Sub-total	\$860.20

Berkeley CP Fund (1-31-98)	<u>\$1,427.50</u>
Total Balance	\$2,287.70

Message from the Treasurer

Currently, we received dues from 42% of the members on last year's listing. New members who pay dues receive all the current newsletters. Dues have made a difference in our treasury report since our balance continues to rise despite the lack of substantial revenue from the auctions and raffles. Its never too late to pay your dues for the current year.

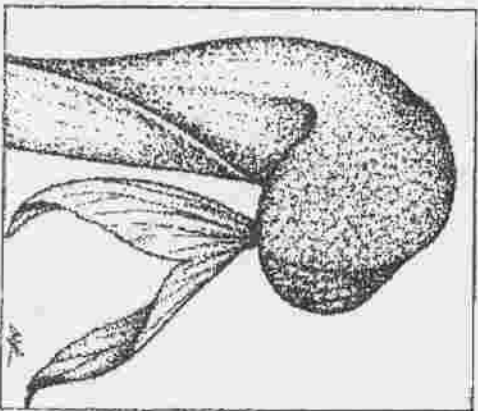
Map to the Next Meeting



Parking lot fee for the U.C. Berkeley gardens is 50 cents per hour. Garden admission is \$3.00 per adult, and \$1.00 per child.

Once in the gardens; walk down the paved road to the meeting hall.

Bay Area Carnivorous Plant Society
39011 Applegate Terrace
Fremont, California 94536



Address Correction Requested

Joe Mazrimas [w98]
329 Helen Way
Livermore, CA 94550

PRINTED MATTER