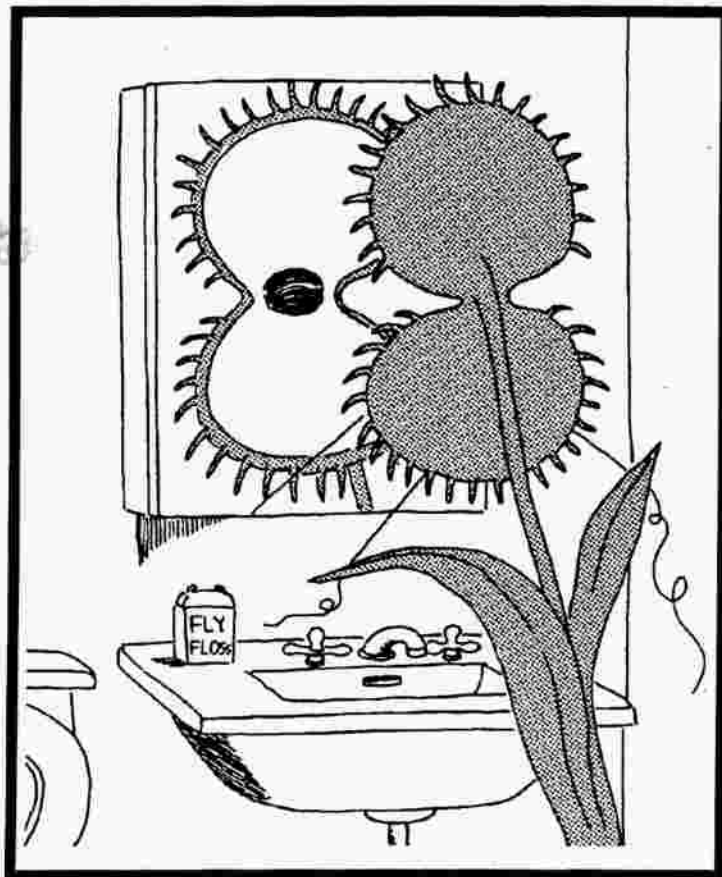


Winter 1994

Volume 3, Number 1

*Bay Area
Carnivorous Plant
Society
Newsletter*



Bay Area Carnivorous Plant Society
39011 Applegate Terrace
Fremont, California 94536

Officers and Organizers

President	Bill Baumgartl	(415) 695-1316
Vice President	Hawkeye Rondeau	(408) 929-6529
Secretary	Larry Logoteta	(209) 823-6542
Treasurer	Joe Mazrimas	(510) 373-1690
Newsletter Editor	Rick Walker	(415) 856-2354
Auction Manager	Malka Zohar	(415) 368-8804
Auctioneer	Peter D'Amato	(707) 869-3641
Raffle Manager	Sharon Leos	(510) 455-0827
Meeting Hall Liaison	Juanita Gex	(510) 632-4505
Jr. Museum CP Manager	Geoff Wong	(415) 552-3331

Bay Area CP Events Calendar

February 5	BACPS Meeting , Lincoln School, Alameda (see map on back page), 12 noon to 4PM.
March 5	Newsletter Deadline for Spring Issue.
4/29-5/1, 1994	Concord Flower and Garden Show.

Next Meeting

As usual, there will be a time for you to display and sell your plants. BACPS keeps 10% of the proceeds for any plants sold. You are also welcome to bring plants for the auction and raffle. The auction fee is \$1 for every \$10 of sales price, rounded up to the nearest dollar.

Report from the Last Meeting

Larry Logoteta

The meeting was attended by 47 members and several new people were introduced. An election for the new officers was held. The results are shown under "Officers and Organizers" above.

The treasury report was read with a total balance of \$1237.72. The treasurer read portions of a letter sent to him by Jeff Gold in which he explained his difficulties continuing the TEPUIS organization because of political and government interference. As a result, Jeff donated \$200.00 to the BACPS, \$1000.00 to the ICPS and \$2000.00 to Nature Conservancy for the restoration of wetlands containing carnivorous plants.

President Mike Ross introduced a new shirt style with a collar and our logo imprinted on the pocket. The cost of these shirts was \$15.00. Other members were

interested in getting new shirts with our logo since supply of the old shirts is low. This resulted in Sean checking out prices in the L.A. area and will report his findings at the next meeting. Robert Allen will check out the Bay Area for prices.

A suggestion was made to have a box at each meeting for voluntary donations to offset the cost of the society's newsletter.

Treasurer's Report

Joe Mazrimas

(as of 10/23/93)	Income	Debit
Plant Sales	\$45.00	
T-Shirt Sales	\$30.00	
Raffles	\$29.00	
Auction	\$117.00	
Newsletter Subscriptions	\$20.00	
Seed Bank	\$7.00	
Mike's Posters	\$8.00	
Voluntary Donations	\$16.00	
Jeff Gold Donation	<u>\$200.00</u>	
TOTAL	\$472.00	
Newsletter (300 Copies)		
Xerox fee		\$135.58
Postage		<u>\$45.24</u>
TOTAL		\$180.82
Current Balance	\$291.18	
Previous Balance (5/22/93)	<u>\$290.22</u>	
Sub-total	<u>\$581.40</u>	
Berkeley CP Fund (7/17/93)	<u>\$947.50</u>	
Total Balance	\$1528.90	

A Tale of Two Hobbies

Carl Wong

[Ed note: the following article was written by Carl for October 1993 issue of The Killinews, the newsletter for the Bay Area Killifish Association. We thought you would enjoy reading it.]

I have been keeping killifish for over 12 years and was trained by one of the best in the hobby. Ironically, it was also Wayland Lee who got me started in growing Carnivorous Plants. I've been using lessons in raising killies and adapting them successfully for CPs.

I've noticed from the start similarities between the hobbies. For instance, aside from the venus flytrap or cobra lilies, there are no florist or nurseries that will carry CPs. There are over a thousand CP species and varieties with more being discovered each year. Up until several years ago trying to obtain different species was very difficult and rarely did you know anyone who would help. The same could be said of killies. I remember listening to Bay Area Killifish Association (BAKA) old timers telling me the only killies available were *Australes*, *Gardneri* and *Whitei*. Both hobbies use Canadian peat moss pretty extensively and I've been using my old fish tanks more and more to house the more difficult plants. Both CP and killies are found throughout the world with the exception that many species of plants are found in Australia. Both hobbies suffer through habitat destruction with both plant and fish species becoming extinct almost daily. I've become more dependent in obtaining rare plants by seeds because they are a lot cheaper and easier to get. When one thinks of plant seeds as killifish eggs then the link between the two hobbies is an easy one. One golden rule that Wayland has taught me that I use for CPs is that as soon as you get a pair of new fish collect eggs in case something happens to them. Invariably, a lot of new arrivals met untimely endings but at least I had some eggs to fall back on. I've saved a lot of species of plants that same way, but instead of seeds, you can propagate through leaf, stem or root cuttings. Another killie rule I use is, while there are a number of CP hybrids, I don't keep any, nor will I create any new ones. I feel there are enough species out there with different forms and colors to keep my hobby interesting. It makes sense to try to preserve the species.

During the Sept. BAKA meeting, Roger Brousseau gave a fine presentation of South American killies. It was especially interesting for me because a lot of the areas he mentioned where certain species of killies were found are also places of new CP discoveries. Also, I have heard from people on CP expeditions, of tepuis in Venezuela (table-top mountains) where pools of unknown fish were seen. When I first heard of those reports I immediately thought of killies!

I now have about 250 species and varieties of CPs but the great thing is that I don't have to feed them. The good news is that the Bay Area is also home to a CP club. For those BAKA'ers who wish to participate in the next CP meeting, just drop me a line. My address is 39011 Applegate Terrace, Fremont, CA 94536. I'll send a current newsletter and for those who get homesick easily, you will find a lot of similarities between the two clubs.

[Ed. note: I'm sure that Carl's offer applies to us CP'ers as well. If you are interested in finding out about killifish, just let Carl know...]

Plants Auctioned at the Last Meeting

Drosera adela, *D. esmeralda*, *D. pauciflora* (2), *D. petiolaris*, *D. prolifera* (3), *D. sp.*, *Darlingtonia californica* (2), *Dionaea muscipula* (4), *Drosophyllum lusitanicum*, *Heliamphora heterodoxa*, *H. heterodoxa x minor*, *H. heterodoxa x nutans*, *H. minor*, *Mimosa pudica* (3), *Nepenthes albomarginata*, *N. boissiensis* "rubra", *N. khasiana*, *N. mirabilis* "thailand", *N. mirabilis anamensis*, *N. rafflesiana x hookeriana*, *N. sanguinea* (2), *N. veitchii*, *N. wrightiana* "konbo" (2), *N. x "effulgent koto"*, *N. x "Isle de france"*, *N. x "chelsonii" v. irregulata*, *N. x "dyeriana"*, *N. x (rokko x thorelli x wittii)* (2), *Pinguicula ayautla*, *P. esseriana*, *Sarcocolla rubra gulfensis*, *Utricularia calycifida 'alba'*, *U. gibba* (2), *U. longifolia*, *U. praelonga*, *U. purpurea*, *U. tricolor*, Hexagonal fish tank, Rectangular fish tank

New CP Book

Hawkeye Rondeau

The Carnivorous Plants of California and the Northwest will be published in late summer or fall of 1994. However, distributional and taxonomic questions remain regarding *P. macroceras* and *U. ochroleuca* in both Oregon and Washington. Any information that you may have on distribution, morphology/type (pings only) and substrate will be greatly appreciated. I am willing to pay for close-up slides or prints. Please send data to Hawkeye Rondeau, 37 Sunnyslope Ave., San Jose, CA 95127, or call (408) 929-6529.

For those of you that already have my book on CP of California, please note that the caption on plate two for pings in the Olympic National park should read *P. macroceras*. Most of the "pings" found in northern California and southern Oregon will probably become known as a subspecies of *P. macroceras*. *P. vulgaris* probably does not occur in either Washington or Oregon, and *P. vulgaris macroceras* may no longer be a valid name.

Announcements

Lapsed Memberships! The following people will be deleted from the newsletter mailing list starting with the second 1994 issue, unless they attend the next meeting or send \$5.00 to the Society address to cover printing and mailing expenses for the next year: *Aaron & David Danielson, Eric Von Geldern, Bob Gigelow, Elizabeth Jones, Andy Joyce, Lisa & Michael Kedrick, Susan Kingsley, Pat Kite, Louie Larsen, Denise Ramirez, John Rizzi, Cy Shuster and Linda Wright.* Remember that you must sign in once per year to keep your membership current!

Donations to School. Juanita Gex, who made all the arrangements for the meeting room, has a junior high school class that would be fascinated by carnivorous plants. If you can spare some extra plants, please bring them to her as a "thank you" for all her efforts.

Classifieds

The CP Growlist is a compilation of the names and addresses of numerous CP enthusiasts, plus an inventory of the plants in each grower's collection. The list is useful for locating rare species, for setting up trades, and for getting specific growing advice. The latest edition has over 1200 plant entries from growers all over the world. If you would like to be listed in the next edition, send your growing list to: Rick Walker, 2060 Oberlin Street, Palo Alto, CA, 94306. For each plant in your list, please indicate whether it is available for trade or sale. Contributors will receive a copy of the next edition of the list.

Next Newsletter Deadline

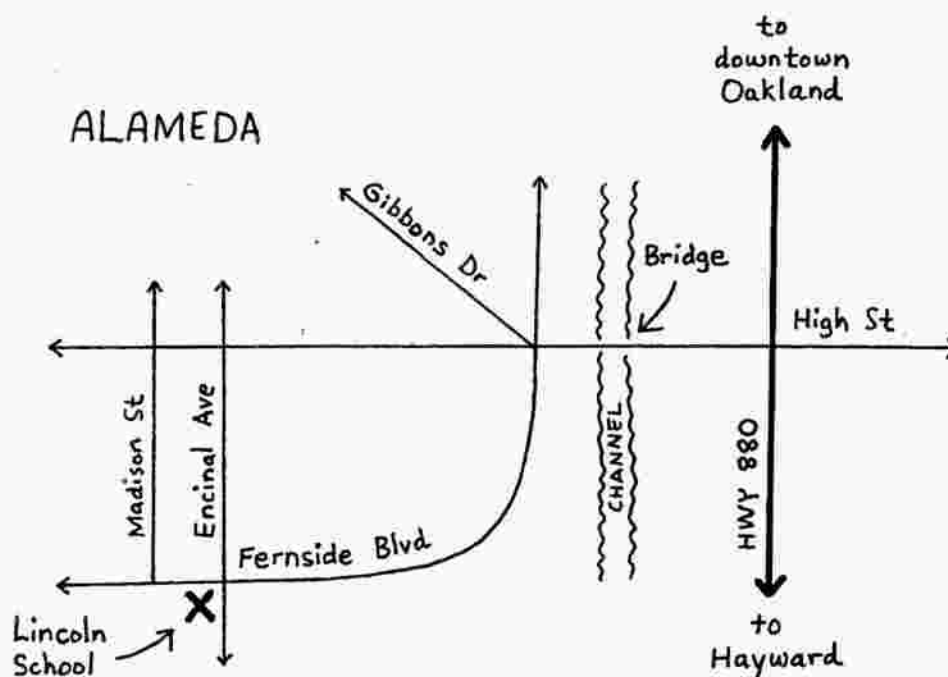
You may notice that the newsletter is rather slim this month. We need *your* contributions - both articles and photos - to make this a worthwhile publication. *It's your newsletter - let's make it a good one!*

Announcements, calendar items, want ads, and articles for the next Newsletter must be received in writing by March 5, 1994. Send information to the society's address on the cover.

If at all possible, please try to submit your articles in both printed form and on an IBM compatible floppy disk in plain ASCII format. The Editor's wrists get pretty sore after typing in each issue!

Articles may be accompanied by photos or line drawings. Send good contrast color or B&W prints of at least 3"x5" size. If you would like your original artwork returned, please send a SASE along with your submission.

Map to the Next Meeting



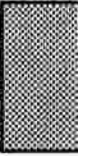
Membership

Any person can become a member of the BACPS by signing the attendance list at a regular meeting. Your membership will expire one year after the last meeting you attend. There are no dues.

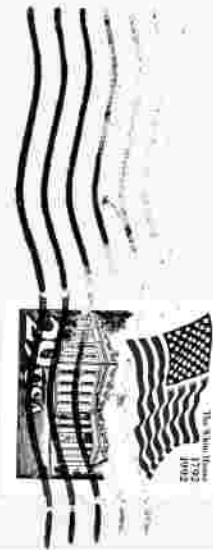
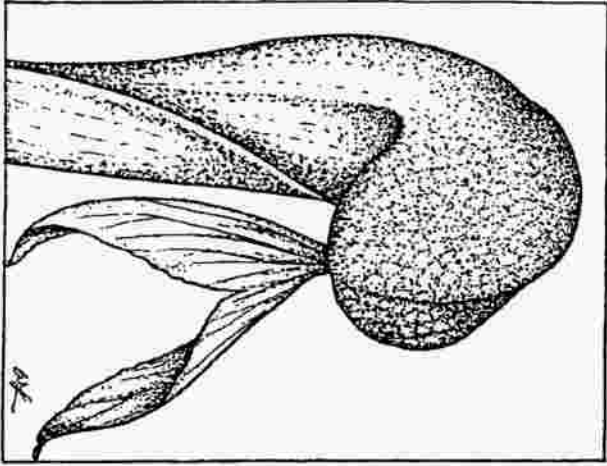
If you are unable to regularly attend the meetings, but would still like to receive a copy of the newsletter, send a note so stating along with \$5.00 to the Society address to cover printing and mailing expenses for one year.

Illustrations

Cover: *Dionaea muscipula*, flossing after a good meal. (Apologies to Gary Larson!).



Bay Area Carnivorous Plant Society
39011 Applegate Terrace
Fremont, California 94536



Address Correction Requested

Joe & Kathy Mazrimas
329 Helen Way
Livermore CA 94550

PRINTED MATTER